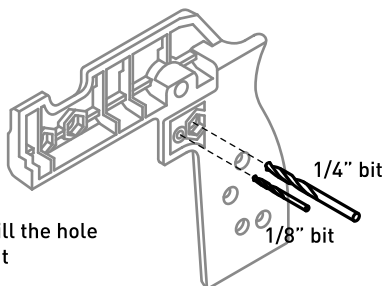


GRIP PANEL FINGER REST

Tools required: 3 mm hex wrench,
1/8" drill bit and 1/4" drill bit

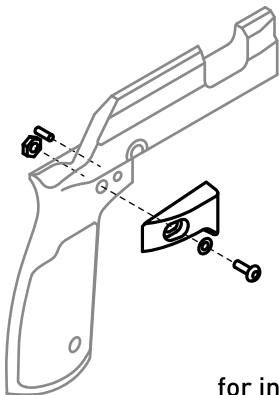
Fits: KRG Grip Panel with Inserts,
Thumbshelf Grip Panel

Restrictions: does not fit one-piece grip panels



Use 1/4" bit to drill the hole
for hex backer nut

Use 1/8" bit to drill the hole to press fit dowel pin



for information visit:

KRG-OPS.com